



**Saint Hilaire du Touvet**

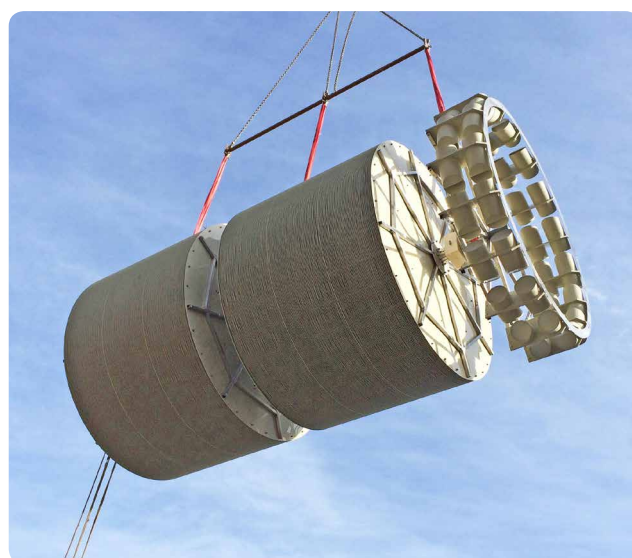
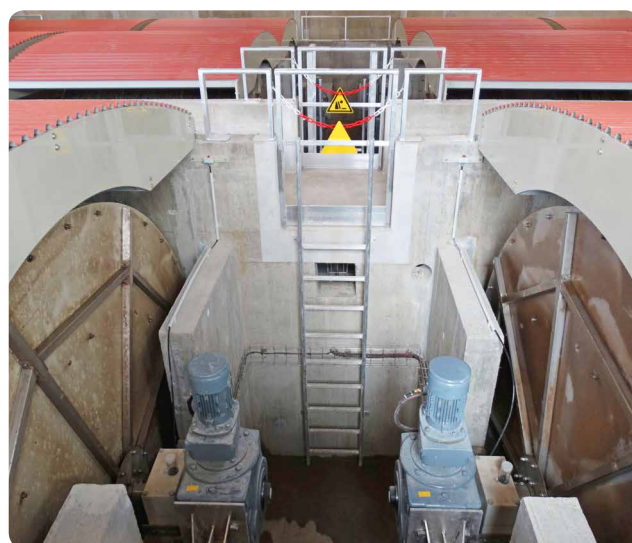
**FRANCE**

## Saint Hilaire du Touvet (38)

Design data	inlet	outlet
Size	2.500 PE	
Daily water flow	425 m <sup>3</sup> /d	
Peak flow	51 m <sup>3</sup> /h	
BOD	150 kg/d	≤ 25 mg/l
COD	300 kg/d	≤ 125 mg/l
TSS	225 kg/d	≤ 35 mg/l
TKN	37,5 kg/d	≤ 40 mg/l

### Ø 3 m Subsoil unit in concrete tank

Type	3x STK-3.000-7.148/4-S
Disc surface	21.444 m <sup>2</sup>
Lamella Separator	2x LMS-E-28/2
Date of manufacture	2015



### System S&P GmbH

Ahornstraße 27  
74592 Kirchberg an der Jagst

Fon +49 (0)7954 9804-0

Fax +49 (0)7954 9804-20

Mail [info@system-s-and-p.de](mailto:info@system-s-and-p.de)

Web [www.system-s-and-p.de](http://www.system-s-and-p.de)

